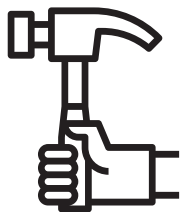


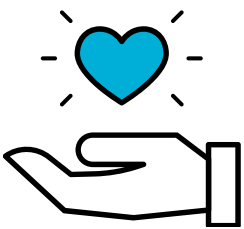
# HOMELESS TRUST FUND (HTF)

## USES



acquisition, construction, or rehabilitation of housing units that supply permanent affordable housing for homeless persons or families, including those at risk of homelessness

rental assistance vouchers for affordable housing for homeless persons or families, including those at risk of homelessness



supportive services required by homeless individuals or families in order to obtain or maintain, or both, permanent affordable housing and

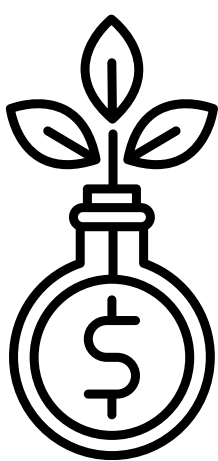
prevention services for individuals and families at risk of homelessness including financial counseling, increase affordable housing stock



**Note: at risk of being homeless include struggling renters, struggling homeowners, newly released ex inmates/prisoners, victims of domestic violence, etc.**

## APPROVED PROJECTS MUST

- 1 measurably reduce homelessness
- 2 demonstrate government savings over time
- 3 use evidence based models
- 4 be replicated in other counties
- 5 include an outcome measurement component
- 6 align with local homeless housing plan



## FUNDING

\$3 surcharge on county recorded documents for HTF and \$2 surcharge for Code Blue that will be put into a fund dedicated solely for the operation of a homelessness housing grant program. Funds not expended after four years will be transferred to the Department of Community Affairs.

## IMPLEMENTATION

Twelve counties already have implemented a county HTF.

A Task Force will advise local government on the creation of homeless housing programs, assess priorities for funding, review applications, and prepare an annual report and measure utilization.



Cost of Home<sup>SM</sup>

Help Habitat make the #CostOfHome something we all can afford.



Morris  
**Habitat**  
for Humanity<sup>®</sup>